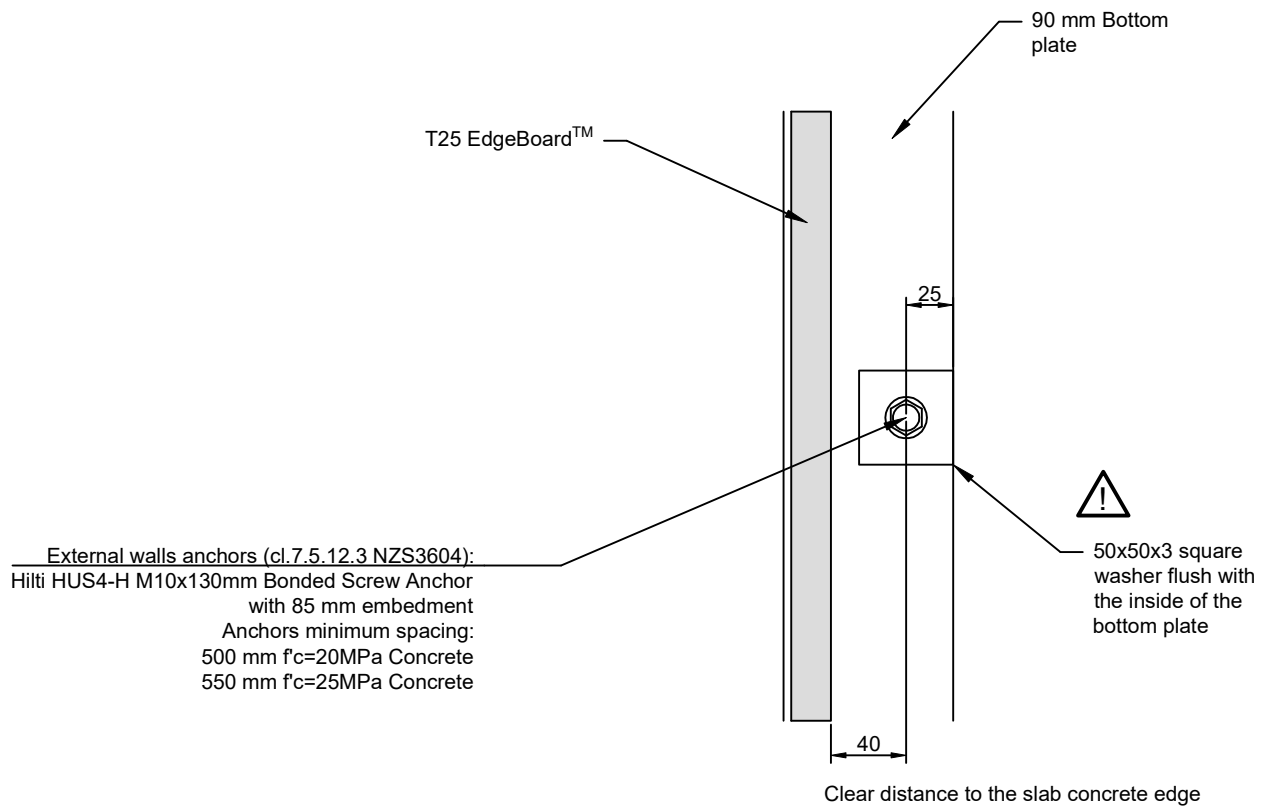


# EDGEBOARD™ PROPOSED CONSTRUCTION DETAILS

Please be aware of the following:

This document was created to harmonize with sections 1 through to 13 of NZS3604, excluding the informative sections from 14 to 17, and to comply with the manufacturer's specifications for the proprietary systems depicted therein.

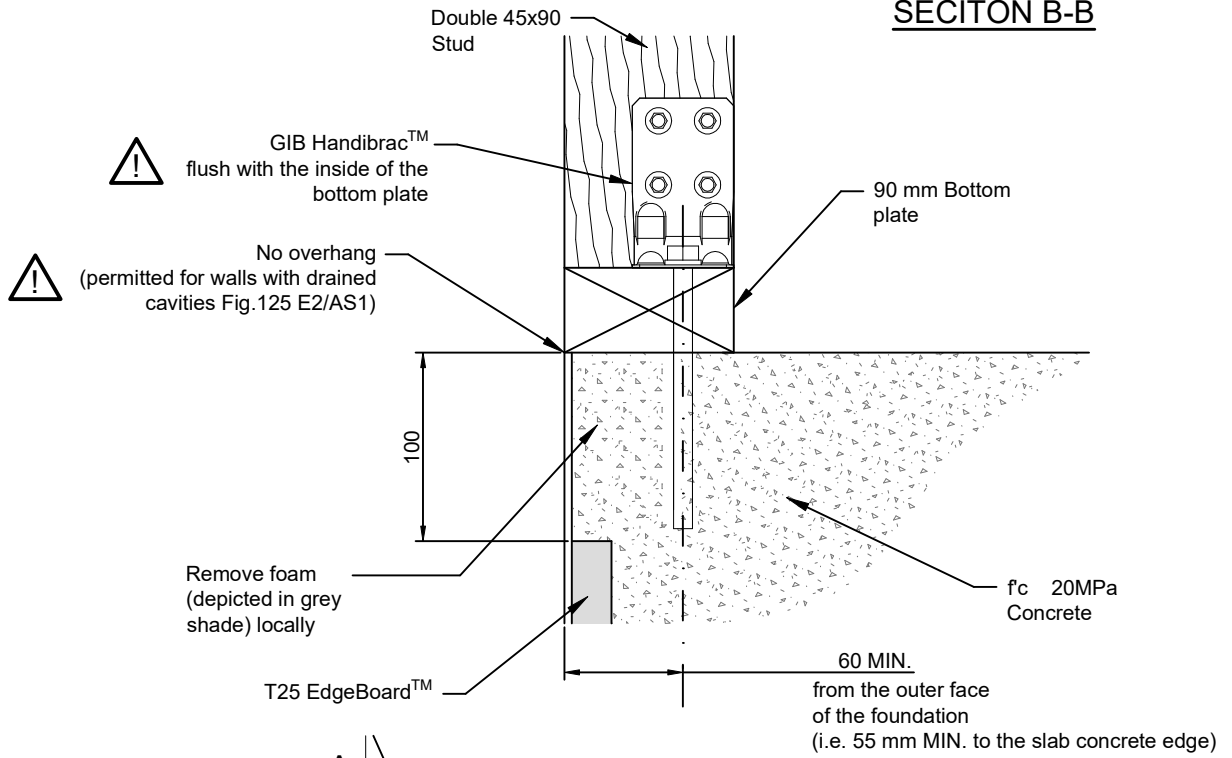
### TOP VIEW



## External walls anchors details for T25 EdgeBoard™

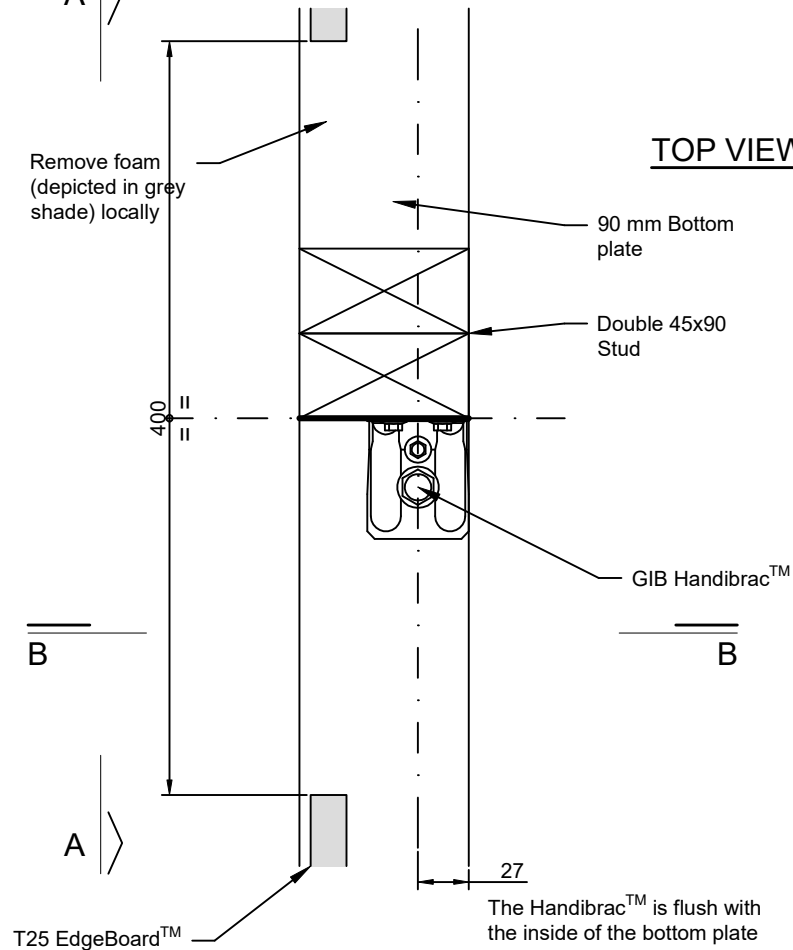
DETAIL AN03 - rev.140923 - N.T.S.

**SECITON B-B**



A

**TOP VIEW**



Please be aware of the following:

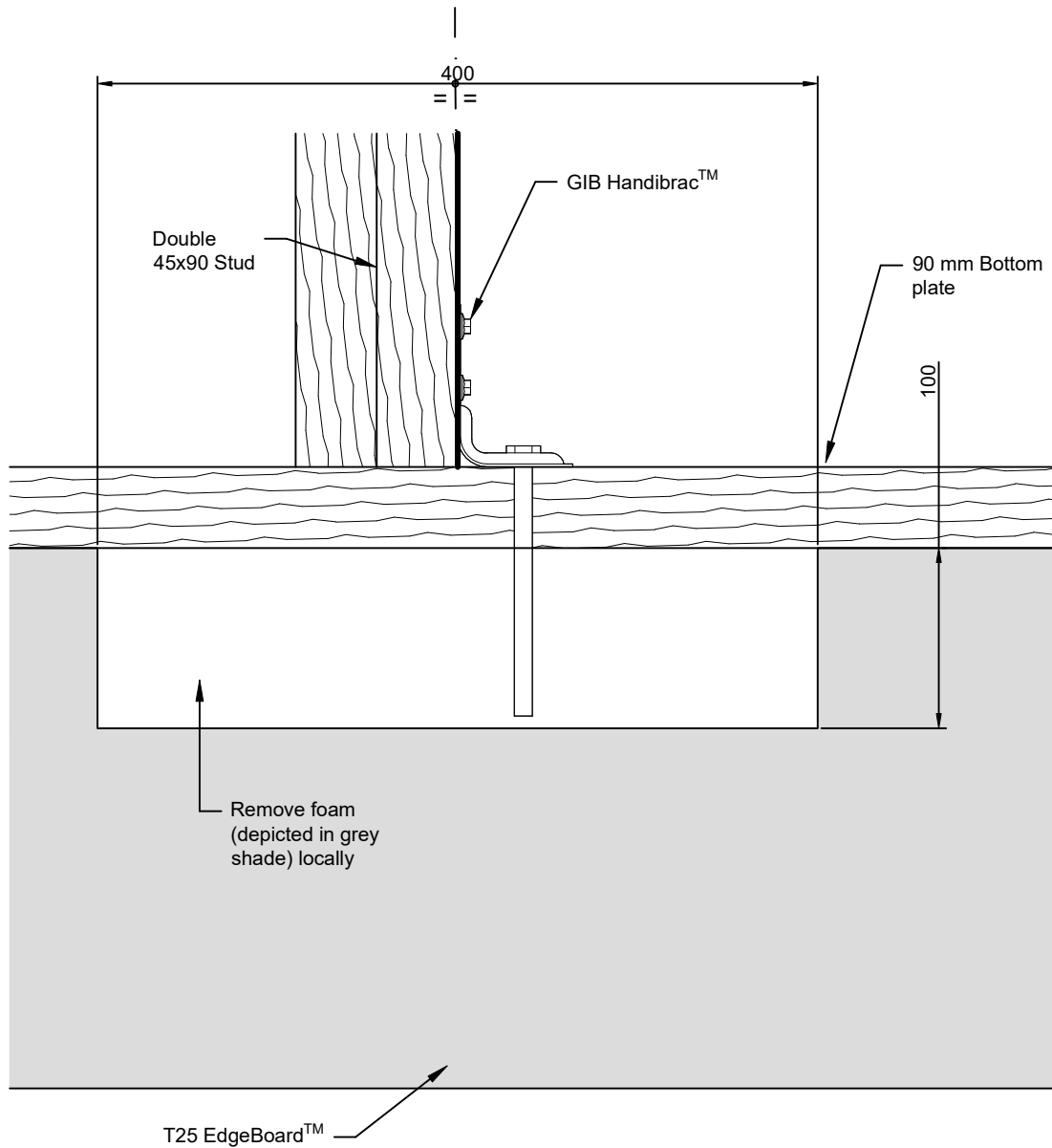
This document was created to harmonize with sections 1 through to 13 of NZS3604, excluding the informative sections from 14 to 17, and to comply with the manufacturer's specifications for the proprietary systems depicted therein.

**GIB HANDIBRAC™  
Anchors details  
for T25 EdgeBoard™**

Please be aware of the following:

This document was created to harmonize with sections 1 through to 13 of NZS3604, excluding the informative sections from 14 to 17, and to comply with the manufacturer's specifications for the proprietary systems depicted therein.

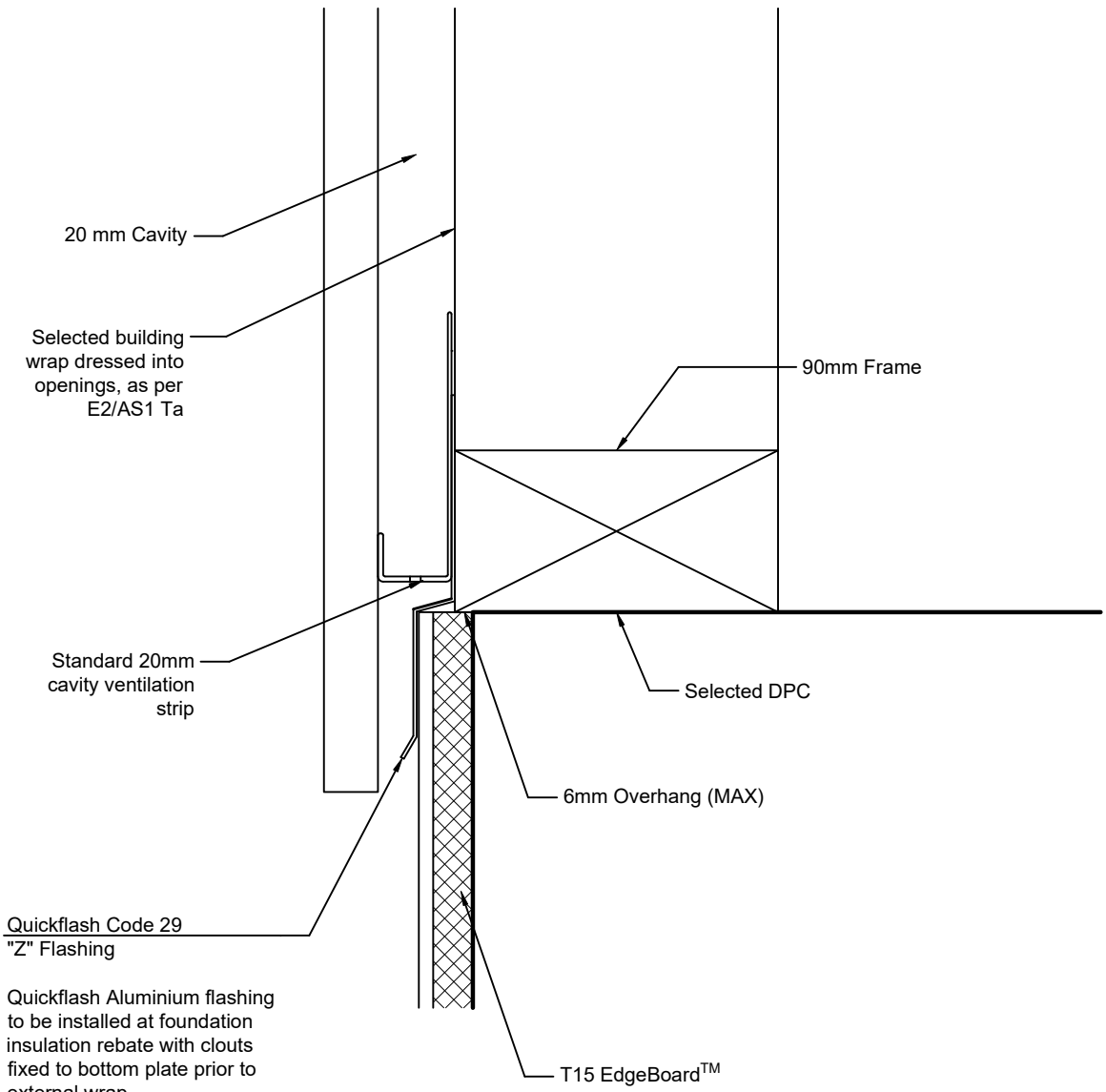
VIEW A-A



**GIB HANDIBRAC™**  
**Anchors details**  
**for T25 EdgeBoard™**

DETAIL AN01 - rev.140923 - N.T.S.

This detail is also suitable for retrofit installations

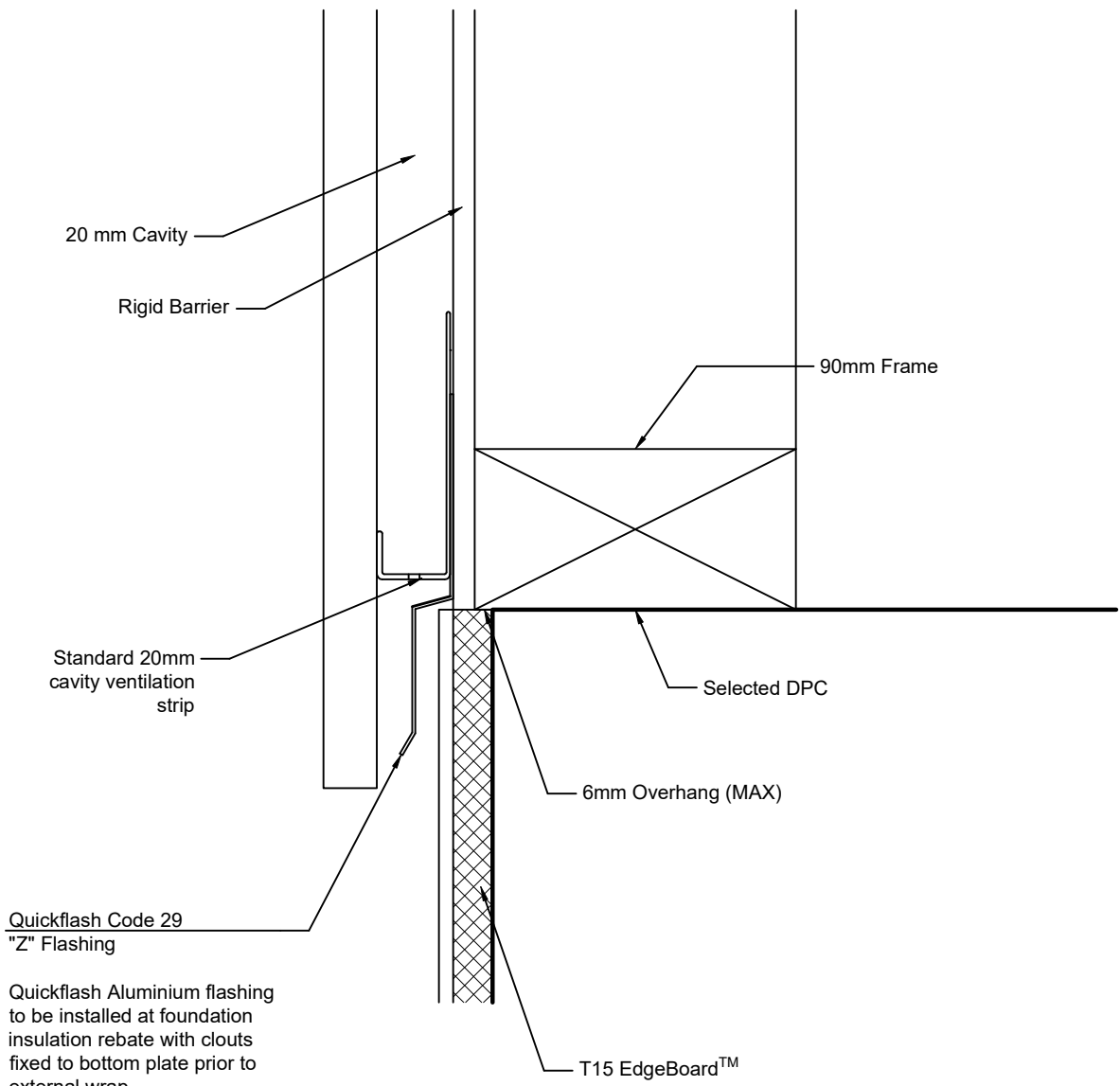


Quickflash Aluminium flashing to be installed at foundation insulation rebate with clouts fixed to bottom plate prior to external wrap..  
Flashing to be installed with 100mm lap with 2 beads of MS silicon and pop rivet at joins.  
Internal/External Corners can be cut to suit length with tin snips, lapped (20mm min), pop riveted and silicone to seal join.

## T15 EdgeBoard™ with ventilated vertical cladding (90 mm frame)

DETAIL VE08 - rev.140923 - N.T.S.

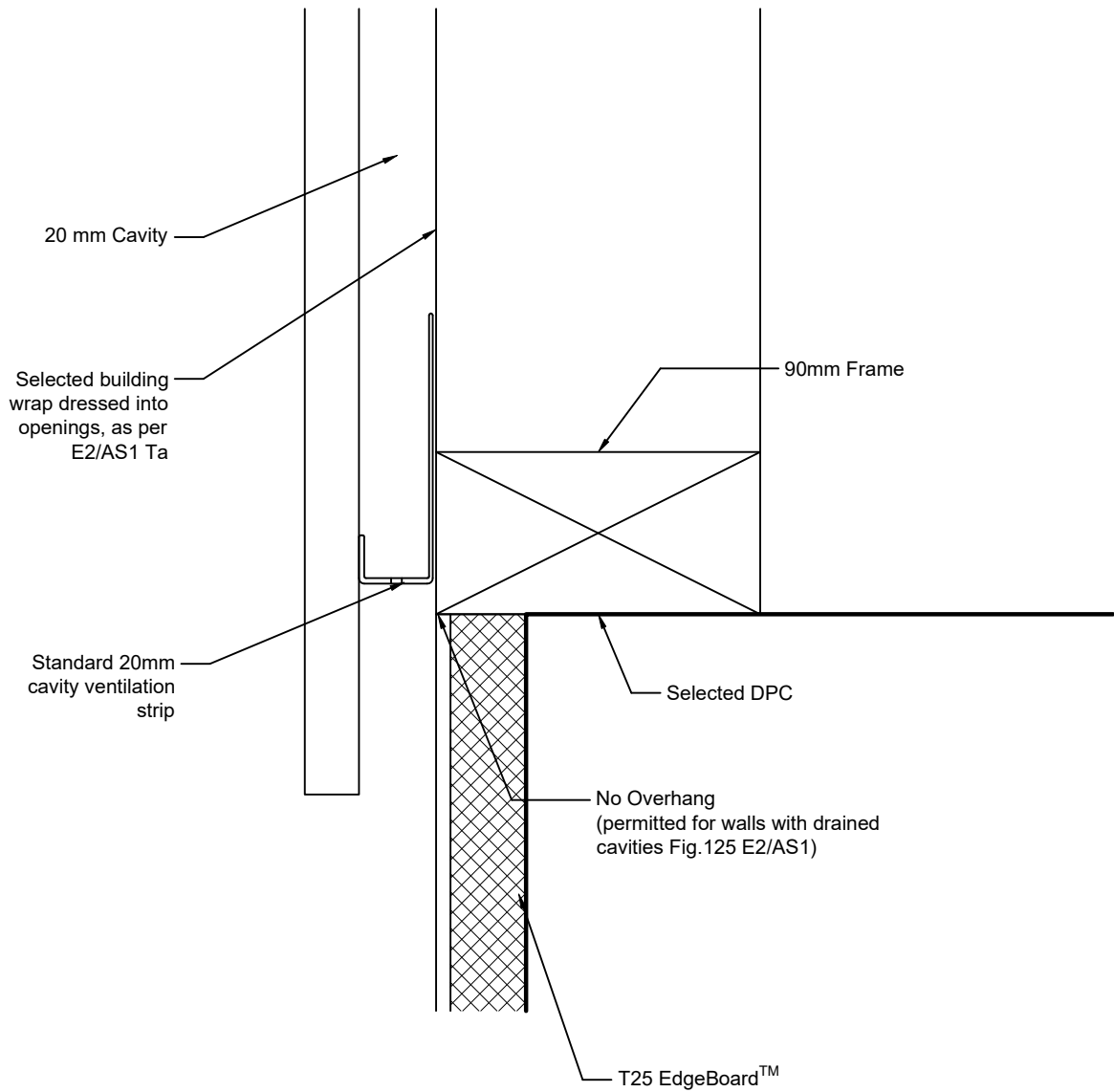
This detail is also suitable for retrofit installations




Quickflash Aluminium flashing to be installed at foundation insulation rebate with clouts fixed to bottom plate prior to external wrap..  
Flashing to be installed with 100mm lap with 2 beads of MS silicon and pop rivet at joins.  
Internal/External Corners can be cut to suit length with tin snips, lapped (20mm min), pop riveted and silicone to seal join.

## T15 EdgeBoard™ with ventilated vertical cladding with rigid barrier (90 mm frame)

DETAIL VE07 - rev.140923 - N.T.S.

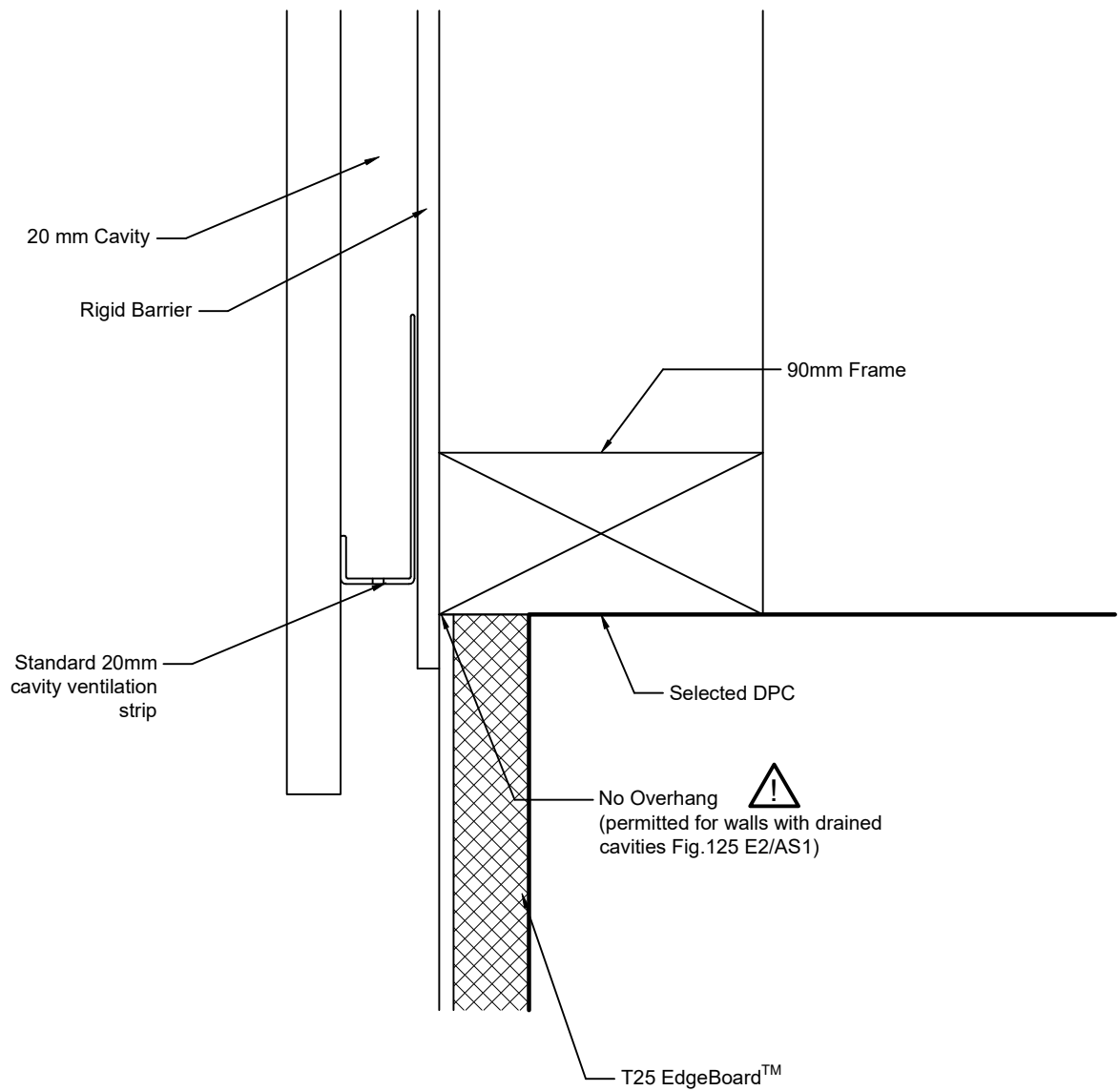




**IMPORTANT:**

This configuration requires specific precautions to be taken regarding the installation of bottom plate fastening anchors; therefore, the information in this document must be read in conjunction with the details AN01, AN02, and AN03.

**T25 EdgeBoard™**  
 with ventilated  
 vertical cladding  
 (90 mm frame)

DETAIL VE06 - rev.140923 - N.T.S.



 **IMPORTANT:**

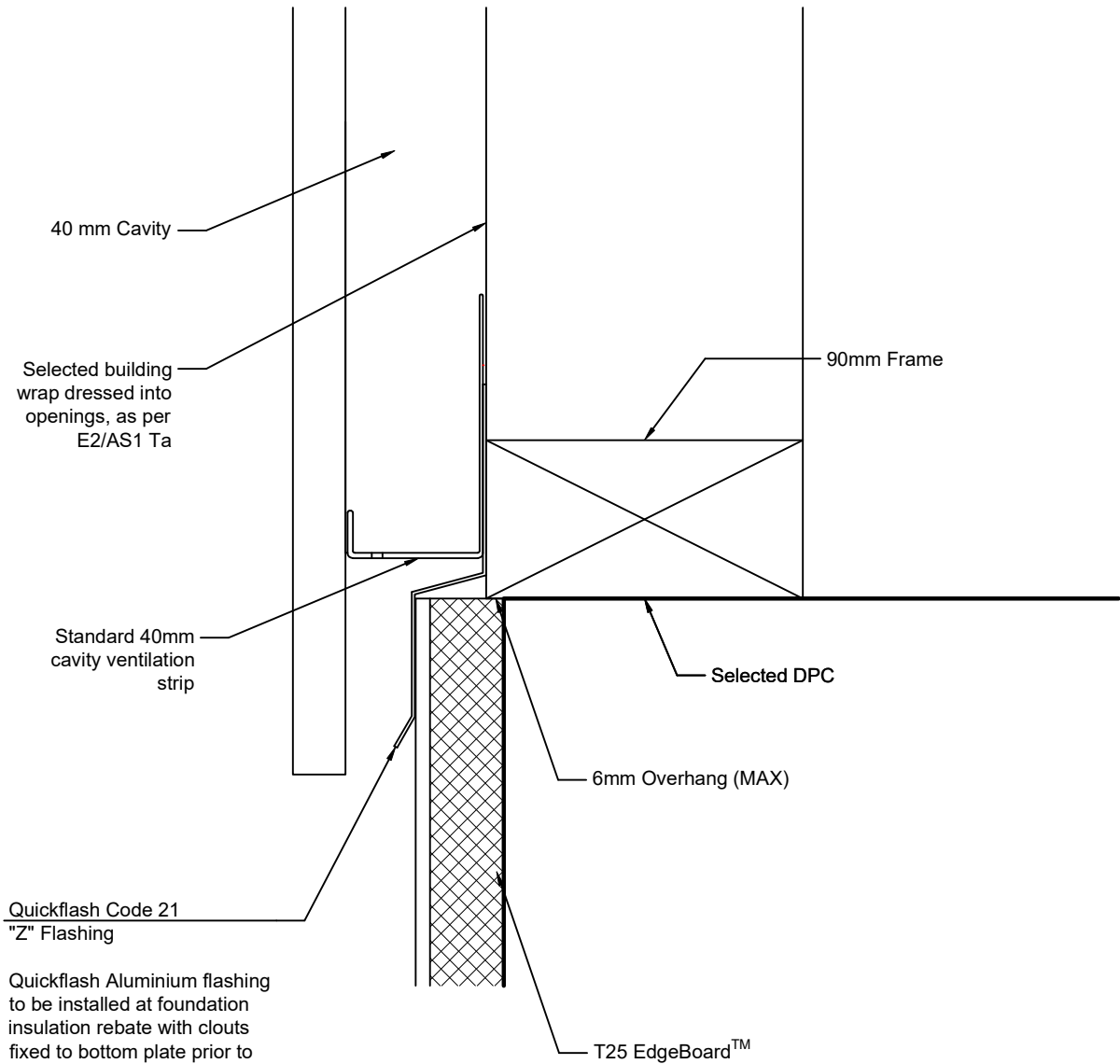
This configuration requires specific precautions to be taken regarding the installation of bottom plate fastening anchors; therefore, the information in this document must be read in conjunction with the details AN01, AN02, and AN03.

**T25 EdgeBoard™  
with ventilated  
vertical cladding  
with rigid barrier  
(90 mm frame)**

DETAIL VE05 - rev.140923 - N.T.S.



This detail is also suitable for retrofit installations

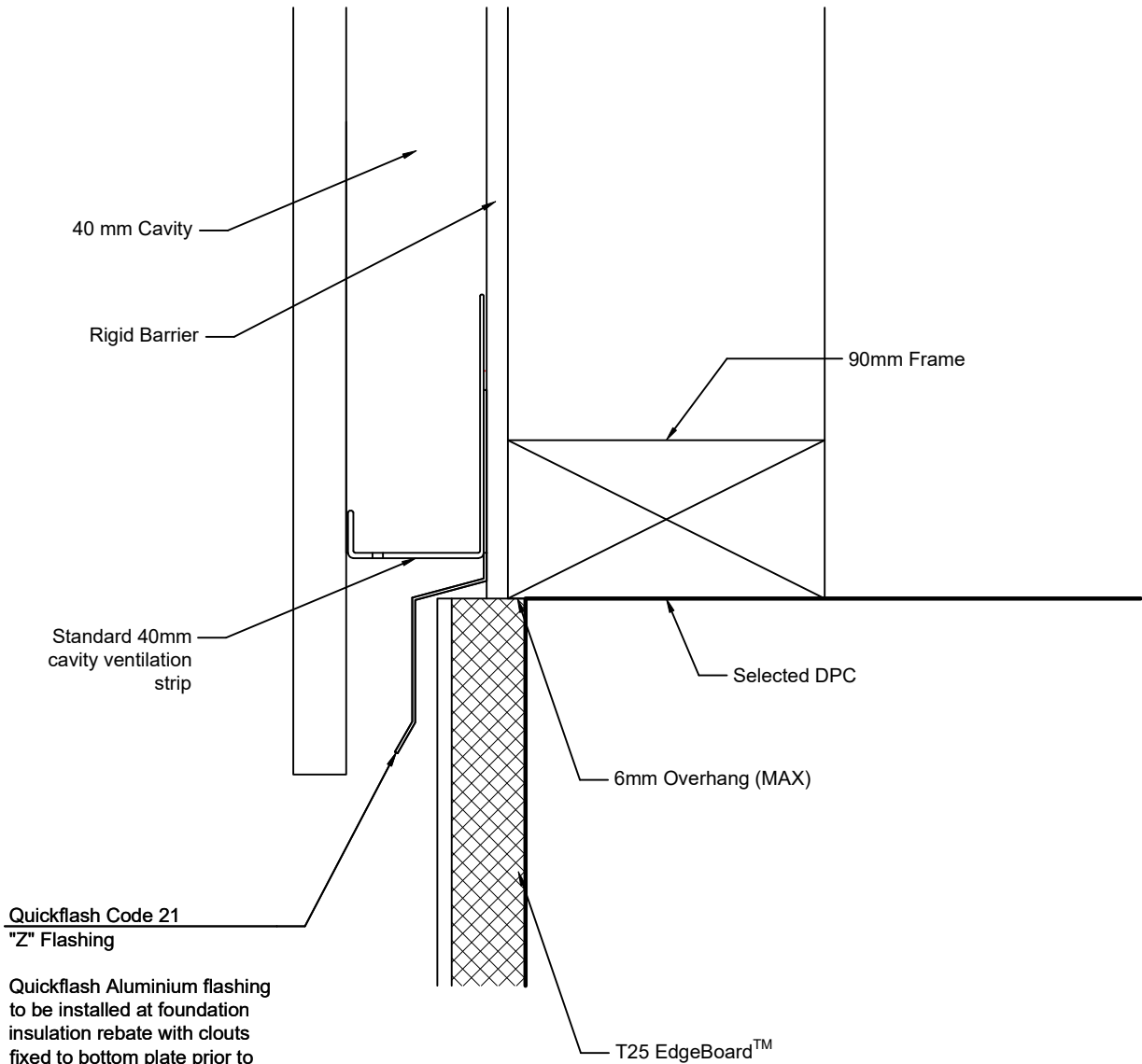


Quickflash Aluminium flashing to be installed at foundation insulation rebate with clouts fixed to bottom plate prior to external wrap.  
Flashing to be installed with 100mm lap with 2 beads of MS silicon and pop rivet at joints.  
Internal/External Corners can be cut to suit length with tin snips, lapped (20mm min), pop riveted and silicone to seal join.

## T25 EdgeBoard™ with 40 mm ventilated cavity vertical cladding (90 mm frame)

DETAIL VE04 - rev.140923 - N.T.S.

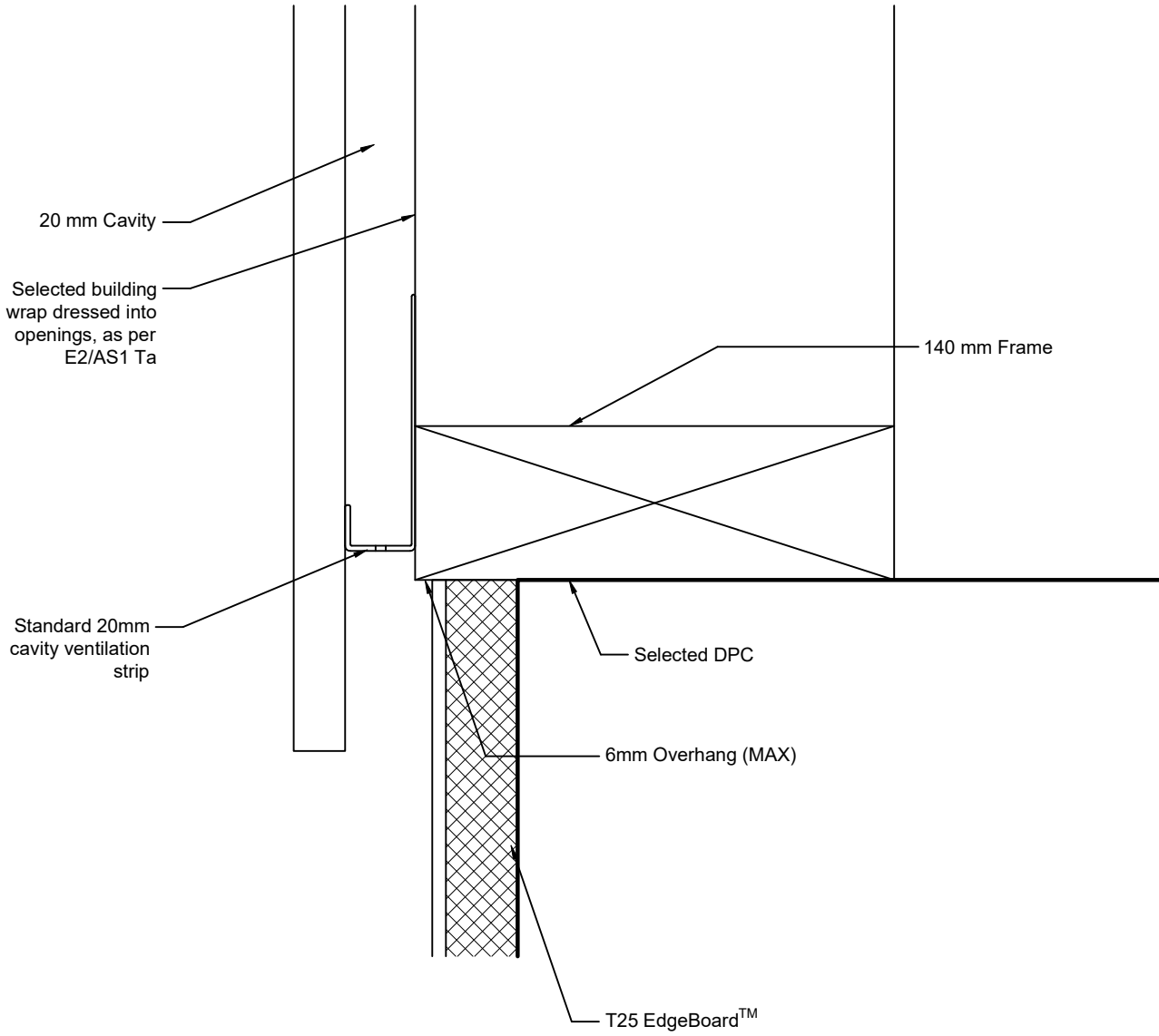
This detail is also suitable for retrofit installations



Quickflash Aluminium flashing to be installed at foundation insulation rebate with clouts fixed to bottom plate prior to external wrap.  
Flashing to be installed with 100mm lap with 2 beads of MS silicon and pop rivet at joins.  
Internal/External Corners can be cut to suit length with tin snips, lapped (20mm min), pop riveted and silicone to seal join.

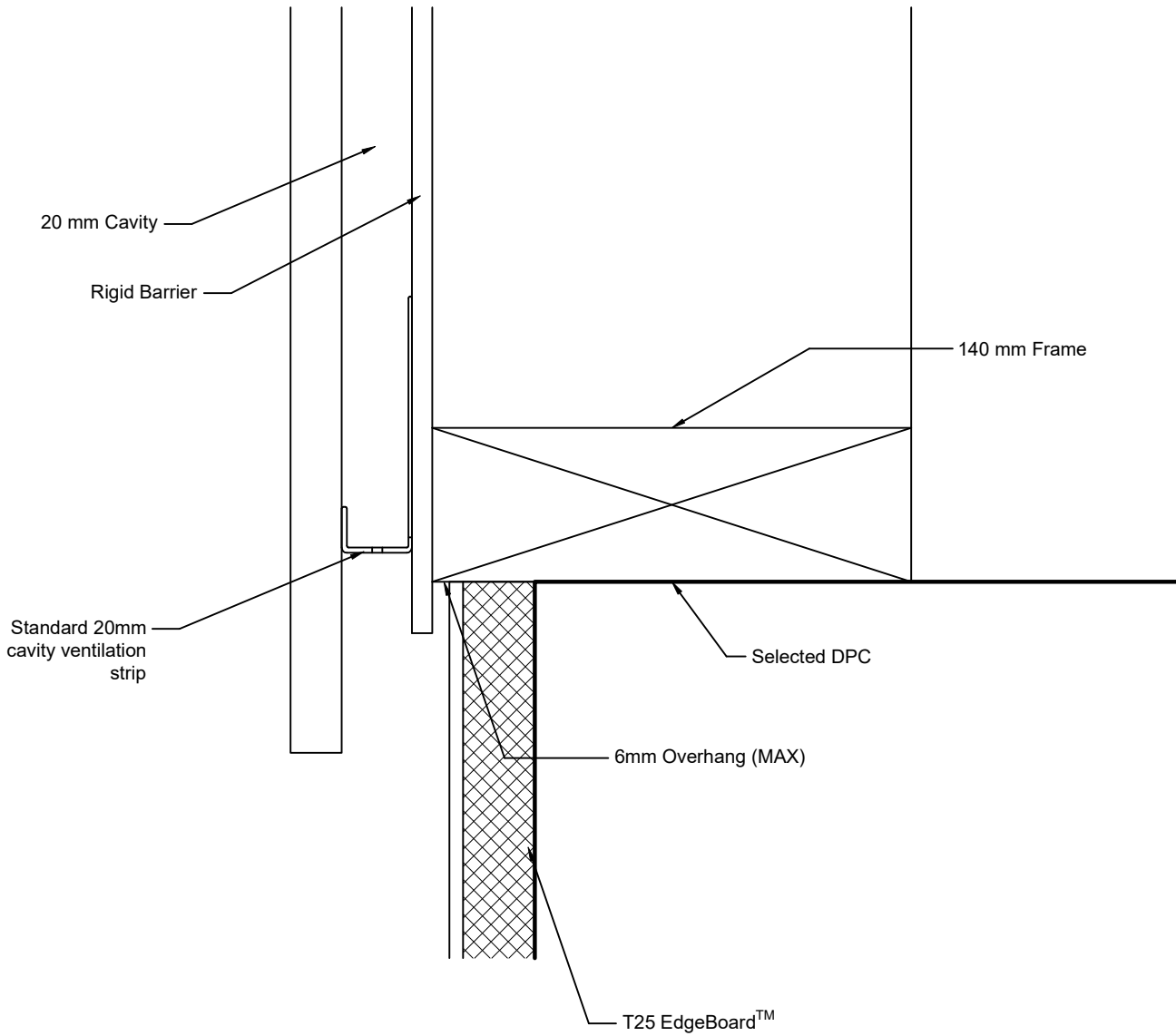
### T25 EdgeBoard™ with 40 mm ventilated cavity vertical cladding and rigid barrier (90 mm frame)

DETAIL VE03 - rev.140923 - N.T.S.



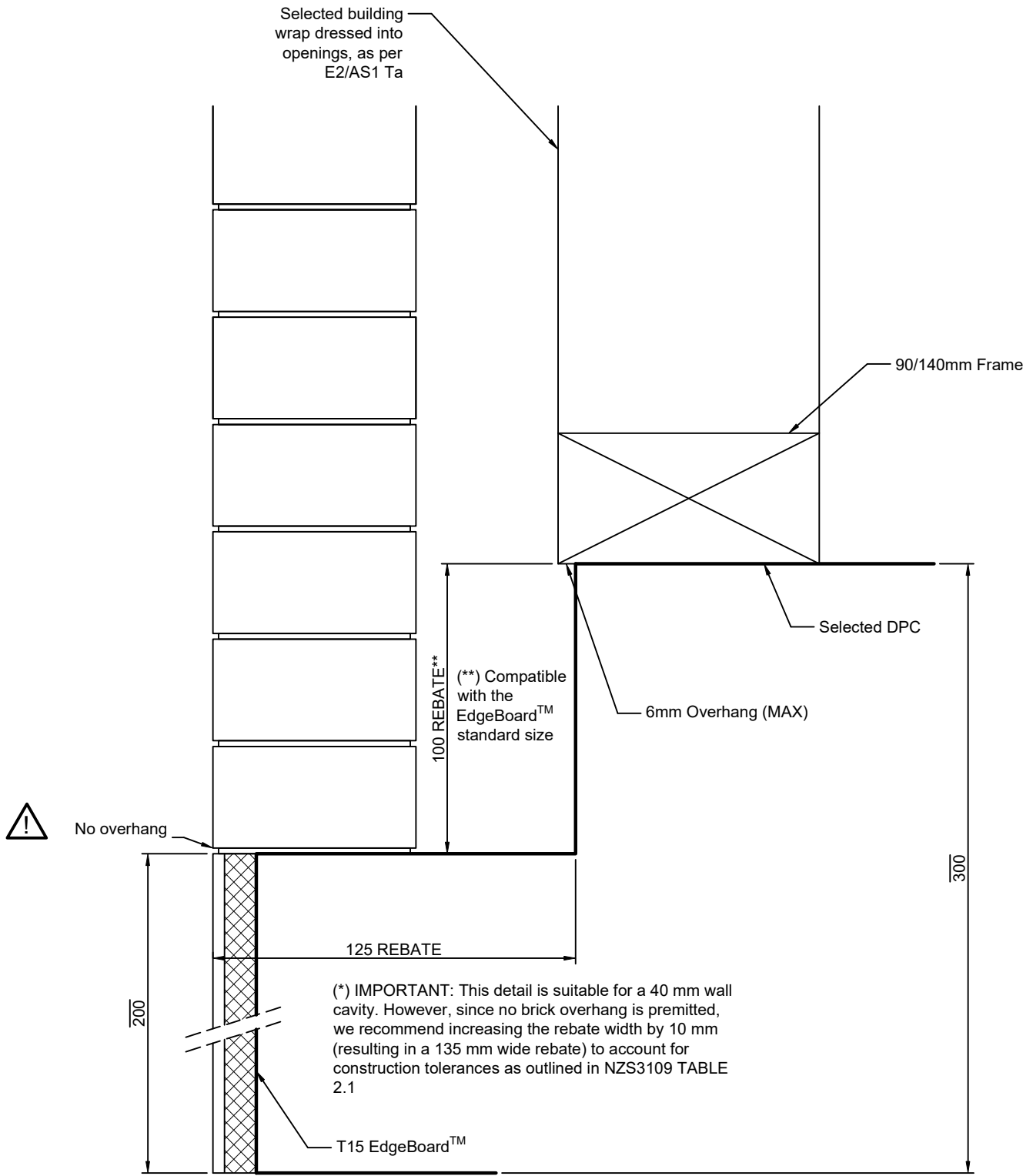
**T25 EdgeBoard™  
with ventilated  
vertical cladding  
(140 mm frame)**

DETAIL VE02 - rev.140923 - N.T.S.



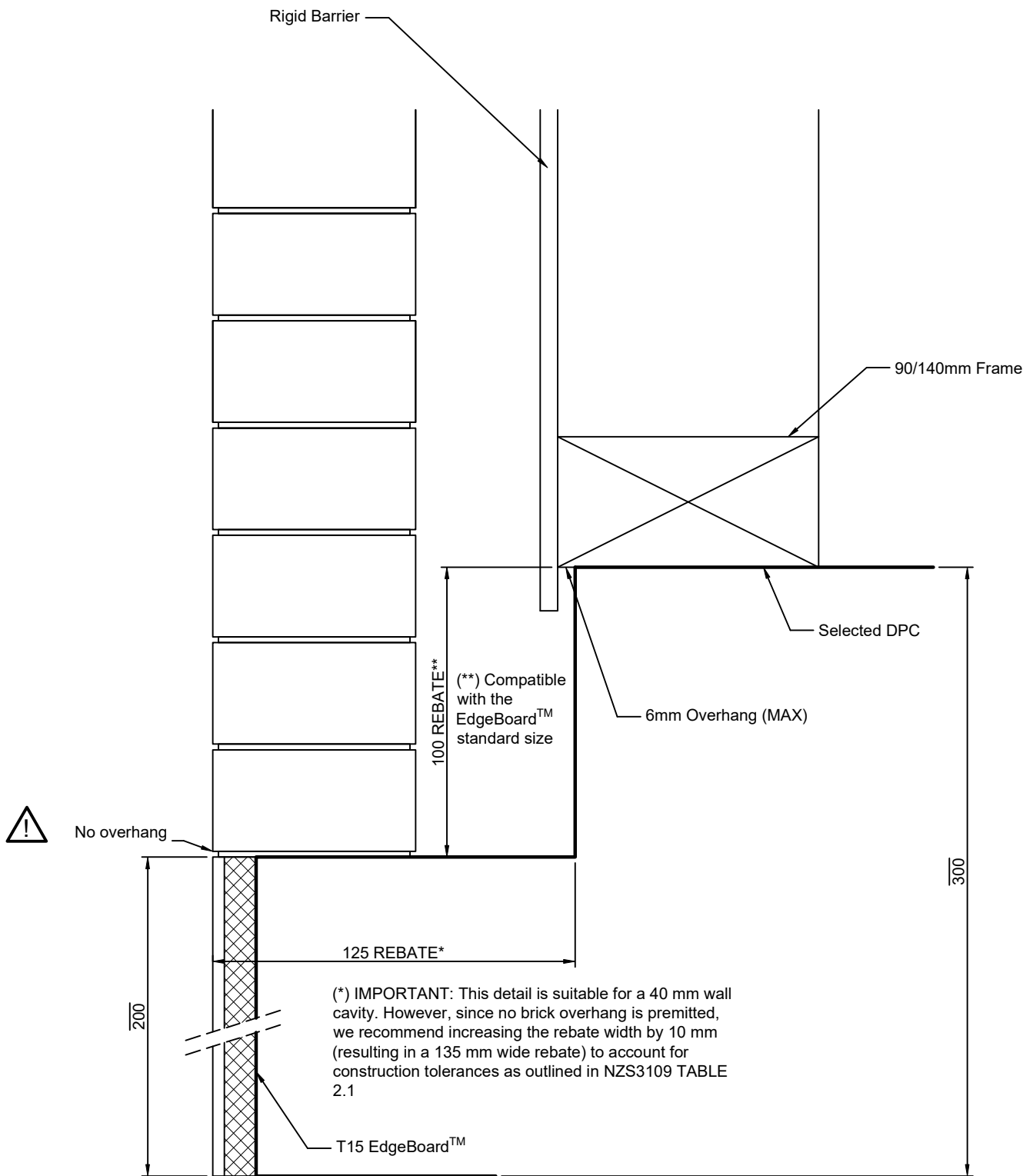
**T25 EdgeBoard™**  
 with ventilated  
 vertical cladding  
 and rigid barrier  
 (140 mm frame)

DETAIL VE01 - rev.140923 - N.T.S.



## T15 EdgeBoard™ with brick veneer

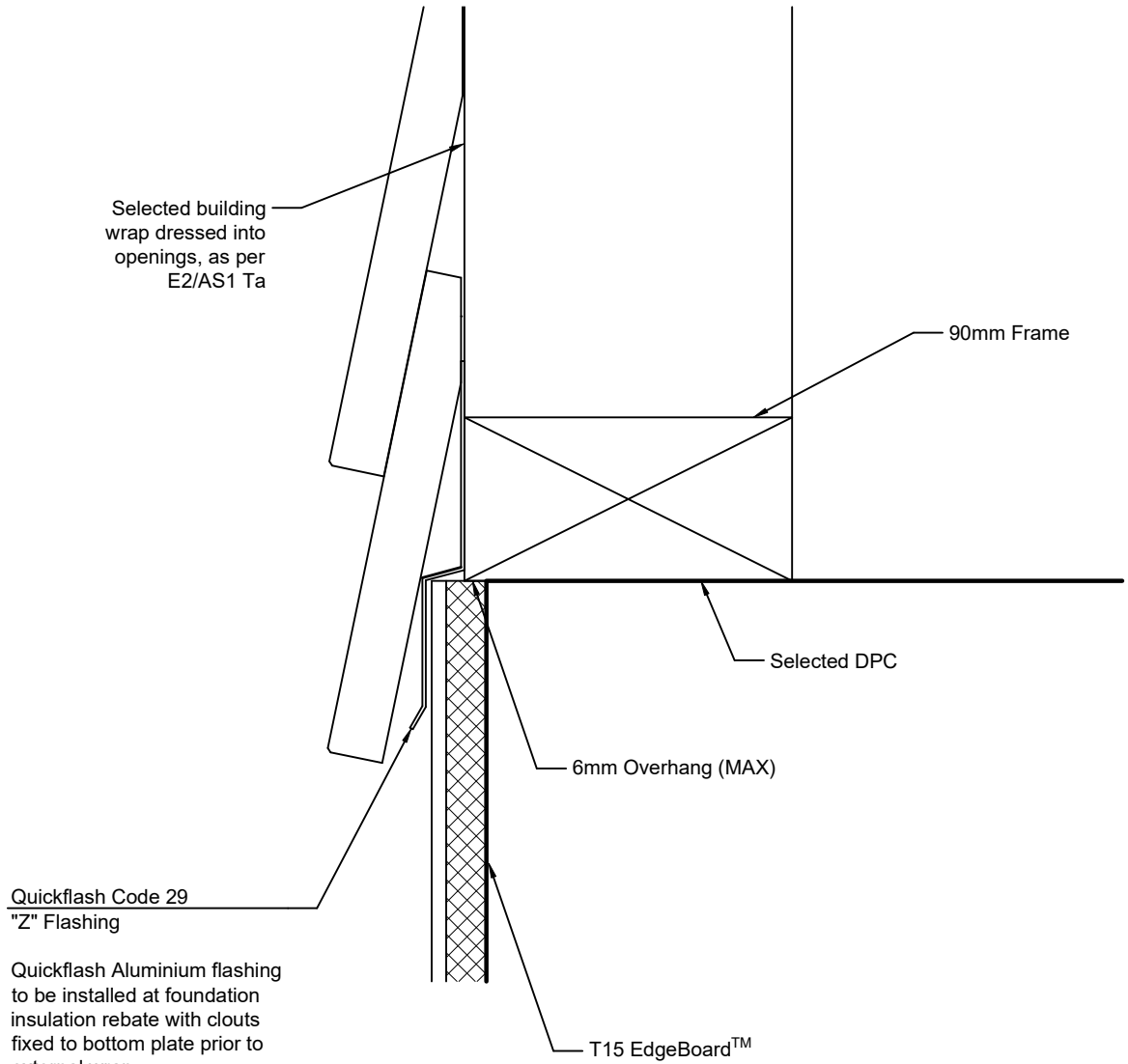
DETAIL BR02 - rev.140923 - N.T.S.



## T15 EdgeBoard™ with brick veneer and rigid barrier

DETAIL BR01 - rev.140923 - N.T.S.

This detail is also suitable for retrofit installations



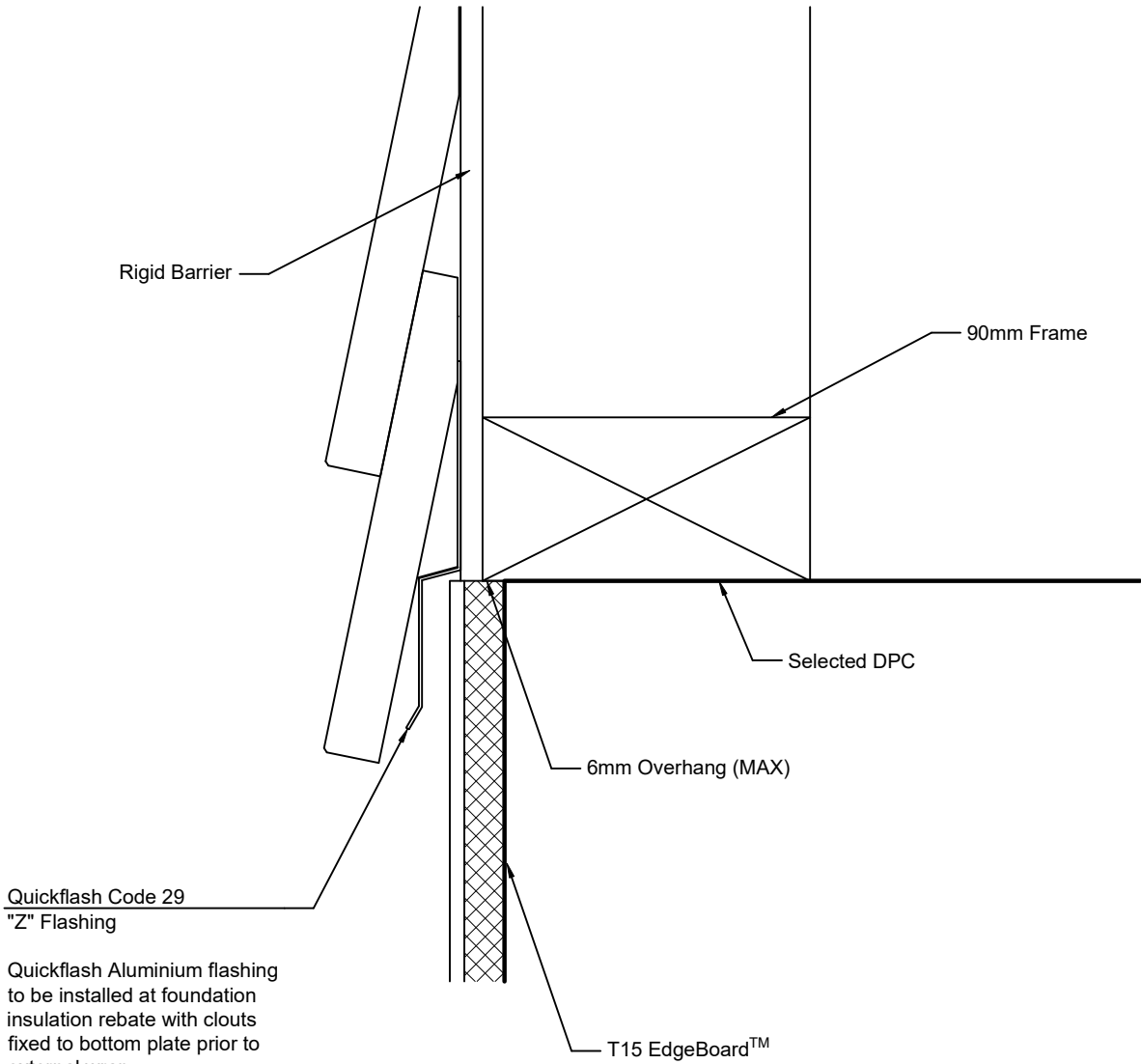
Quickflash Code 29  
"Z" Flashing

Quickflash Aluminium flashing to be installed at foundation insulation rebate with clouts fixed to bottom plate prior to external wrap..  
Flashing to be installed with 100mm lap with 2 beads of MS silicon and pop rivet at joins.  
Internal/External Corners can be cut to suit length with tin snips, lapped (20mm min), pop riveted and silicone to seal join.

### T15 EdgeBoard™ with direct fix bevel cladding (90 mm frame)

DETAIL BE10 - rev.140923 - N.T.S.

This detail is also suitable for retrofit installations



Quickflash Code 29  
"Z" Flashing

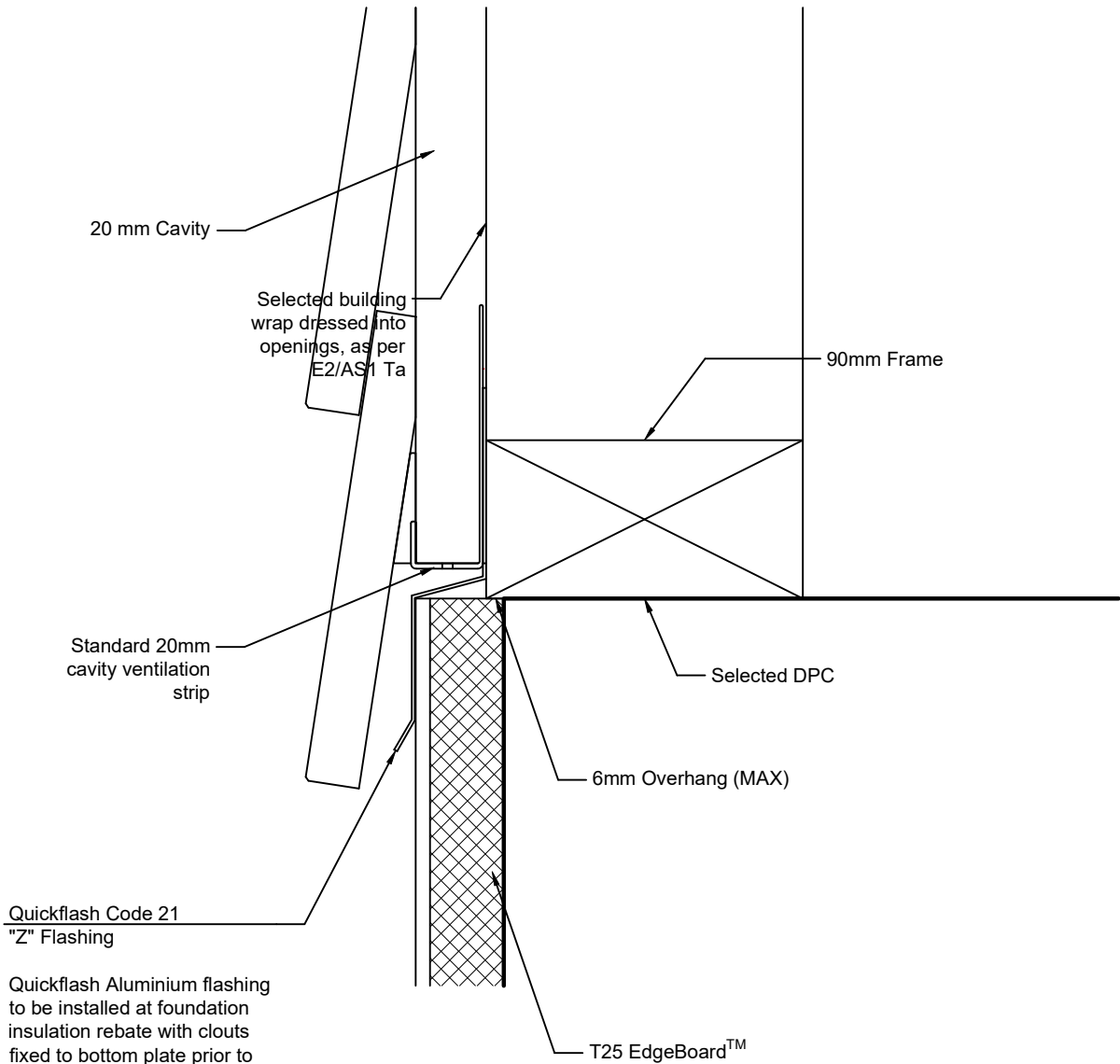
Quickflash Aluminium flashing to be installed at foundation insulation rebate with clouts fixed to bottom plate prior to external wrap..  
Flashing to be installed with 100mm lap with 2 beads of MS silicon and pop rivet at joints.  
Internal/External Corners can be cut to suit length with tin snips, lapped (20mm min), pop riveted and silicone to seal joint.

## T15 EdgeBoard™ with direct fix bevell cladding (90 mm frame)

DETAIL BE09 - rev.140923 - N.T.S.



This detail is also suitable for retrofit installations



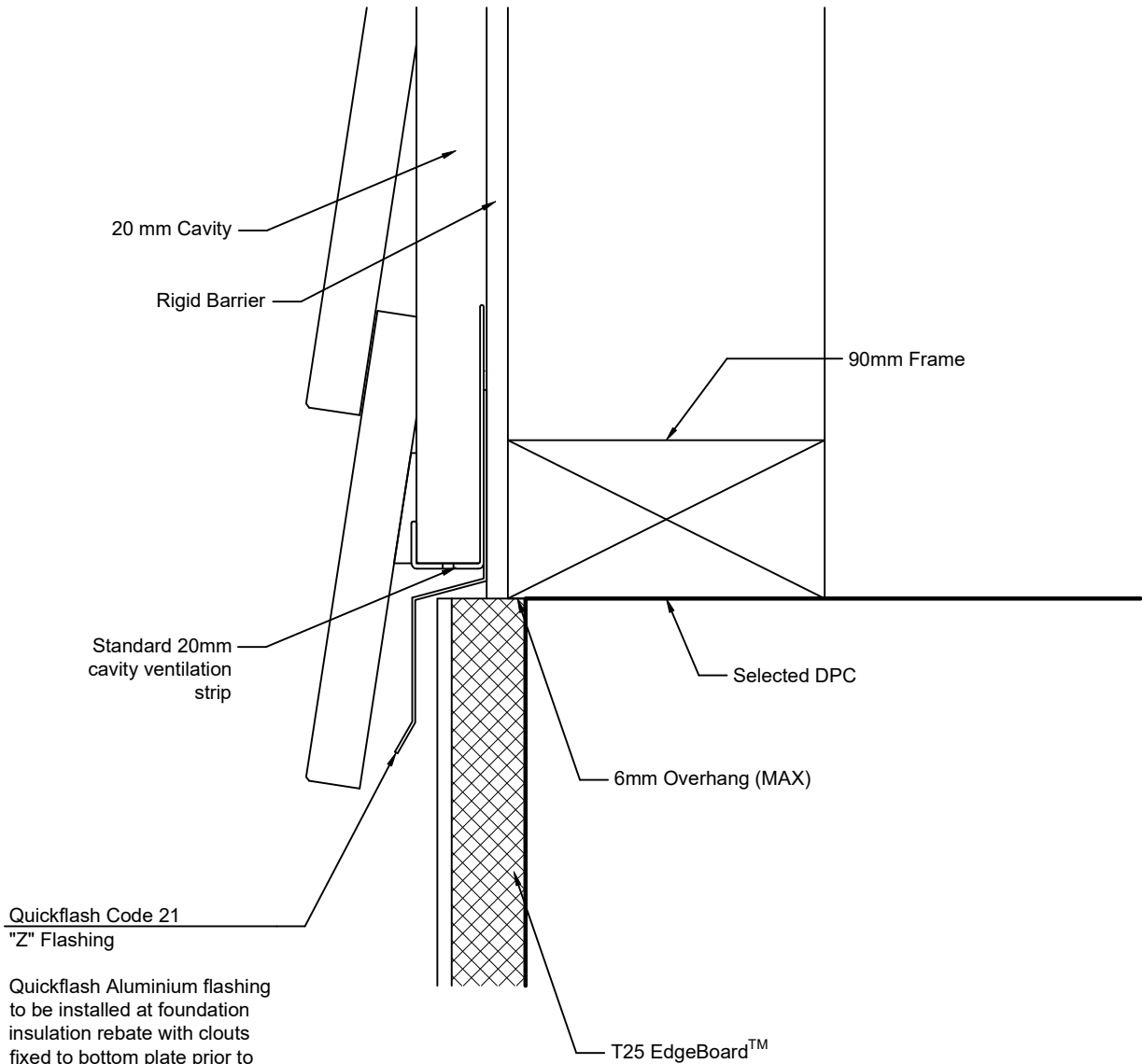
**Quickflash Code 21  
"Z" Flashing**

Quickflash Aluminium flashing to be installed at foundation insulation rebate with clouts fixed to bottom plate prior to external wrap.  
Flashing to be installed with 100mm lap with 2 beads of MS silicon and pop rivet at joins.  
Internal/External Corners can be cut to suit length with tin snips, lapped (20mm min), pop riveted and silicone to seal join.

## T25 EdgeBoard™ with ventilated bevel cladding (90 mm frame)

DETAIL BE08 - rev.140923 - N.T.S.

This detail is also suitable for retrofit installations

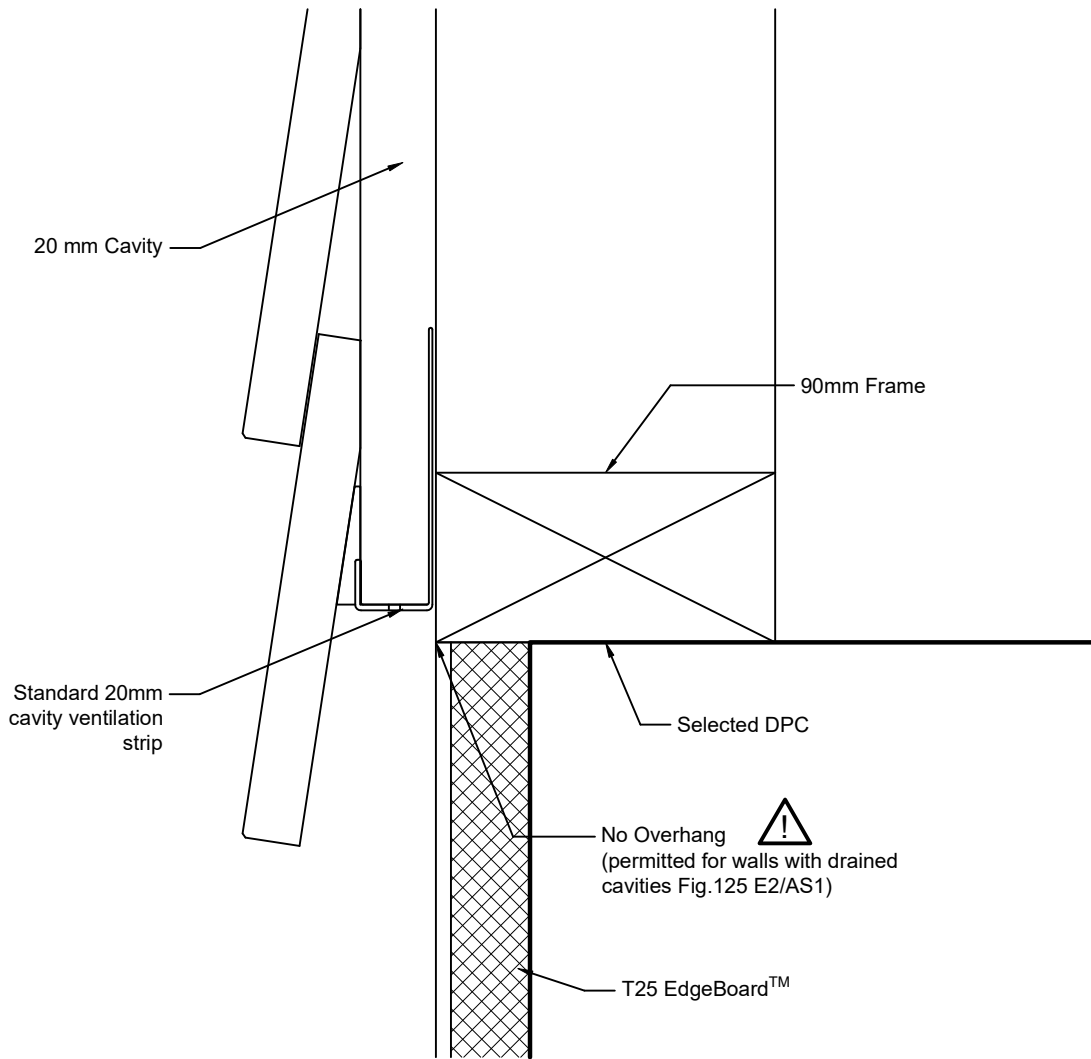


Quickflash Code 21  
"Z" Flashing

Quickflash Aluminium flashing to be installed at foundation insulation rebate with clouts fixed to bottom plate prior to external wrap.  
Flashing to be installed with 100mm lap with 2 beads of MS silicon and pop rivet at joins.  
Internal/External Corners can be cut to suit length with tin snips, lapped (20mm min), pop riveted and silicone to seal join.

**T25 EdgeBoard™  
with ventilated  
bevel cladding  
and rigid barrier  
(90 mm frame)**

DETAIL BE07 - rev.140923 - N.T.S.

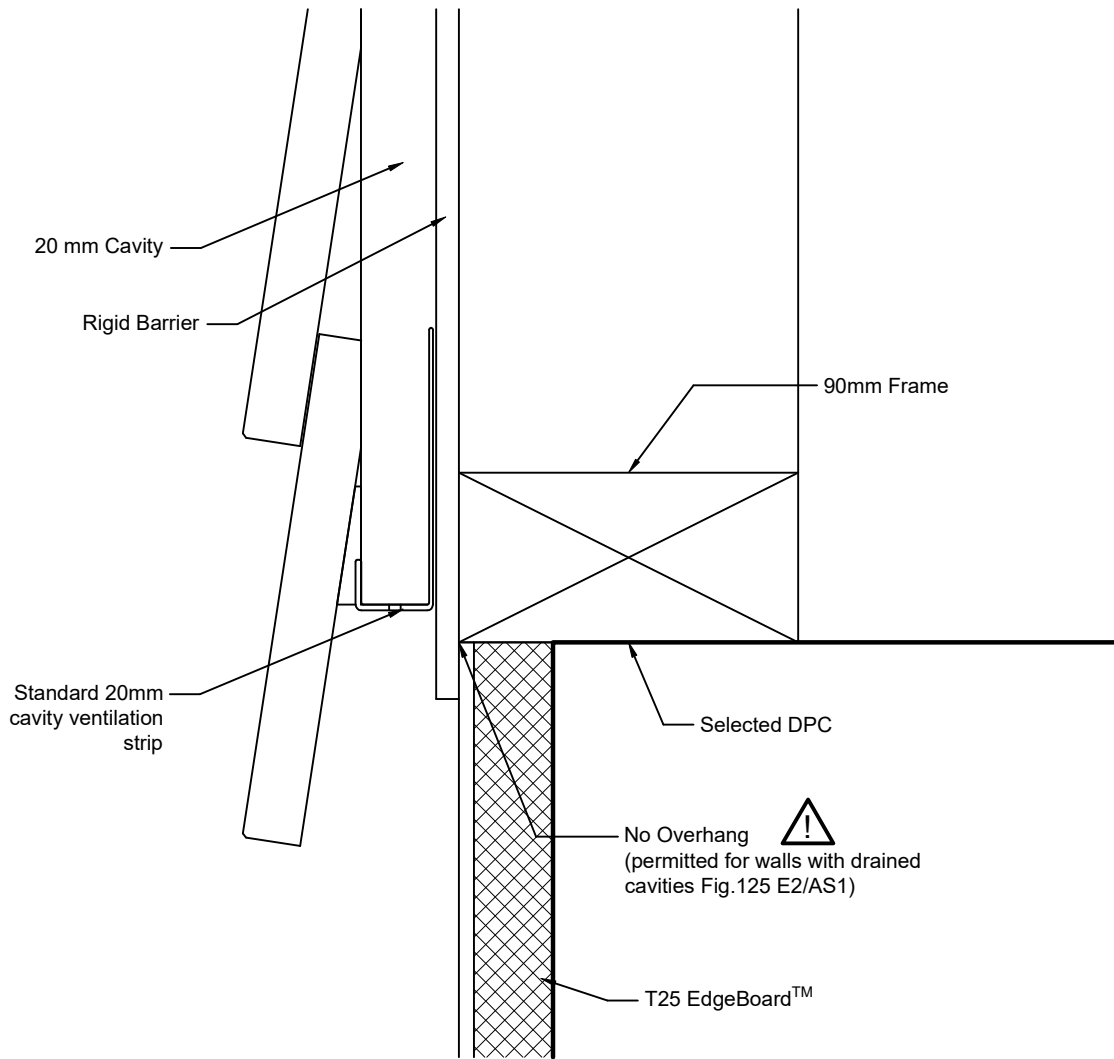



**IMPORTANT:**

This configuration requires specific precautions to be taken regarding the installation of bottom plate fastening anchors; therefore, the information in this document must be read in conjunction with the details AN01, AN02, and AN03.

## T25 EdgeBoard™ with ventilated bevel cladding and rigid barrier (90 mm frame)

DETAIL BE06 - rev.140923 - N.T.S.

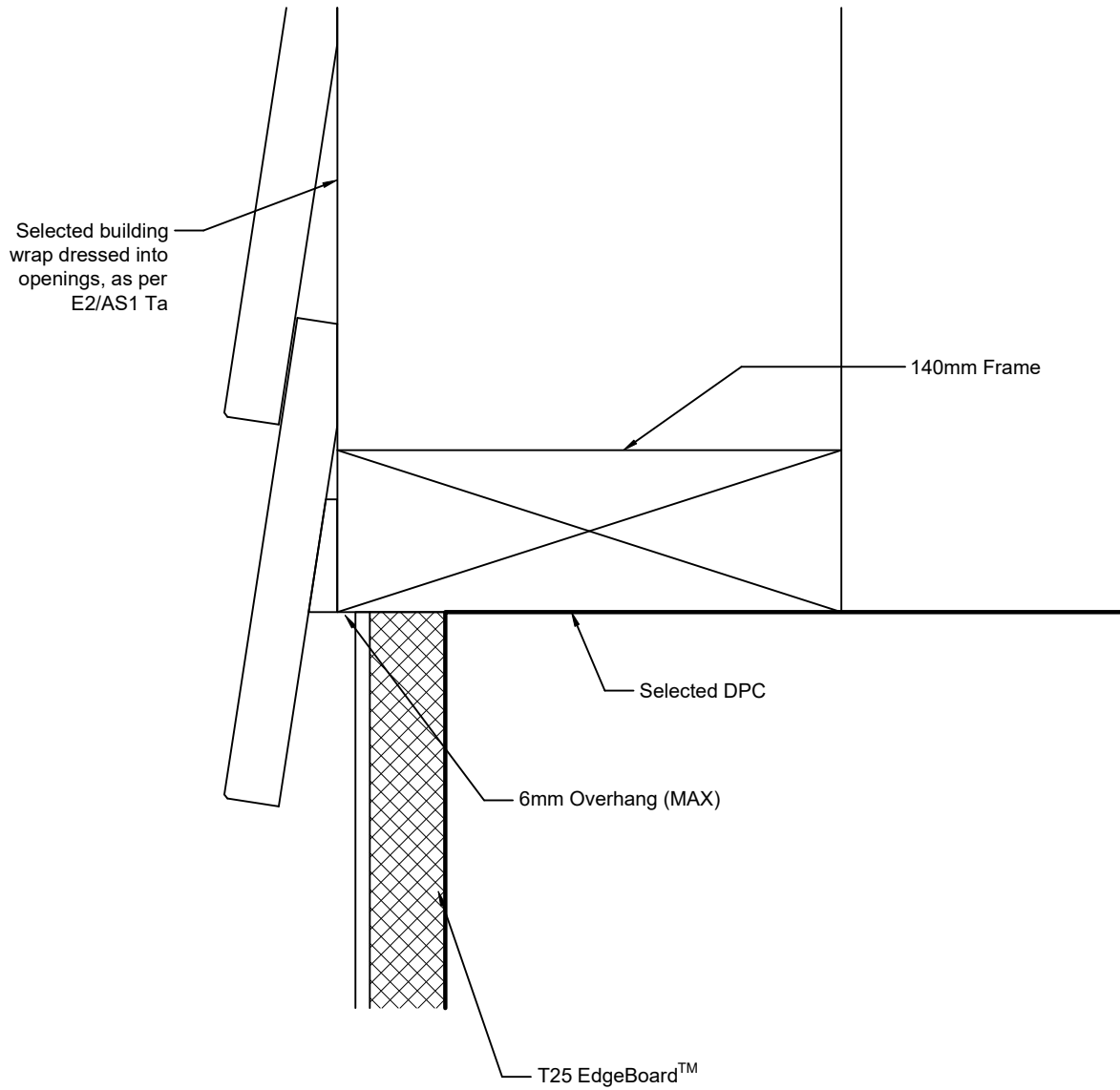


 **IMPORTANT:**

This configuration requires specific precautions to be taken regarding the installation of bottom plate fastening anchors; therefore, the information in this document must be read in conjunction with the details AN01, AN02, and AN03.

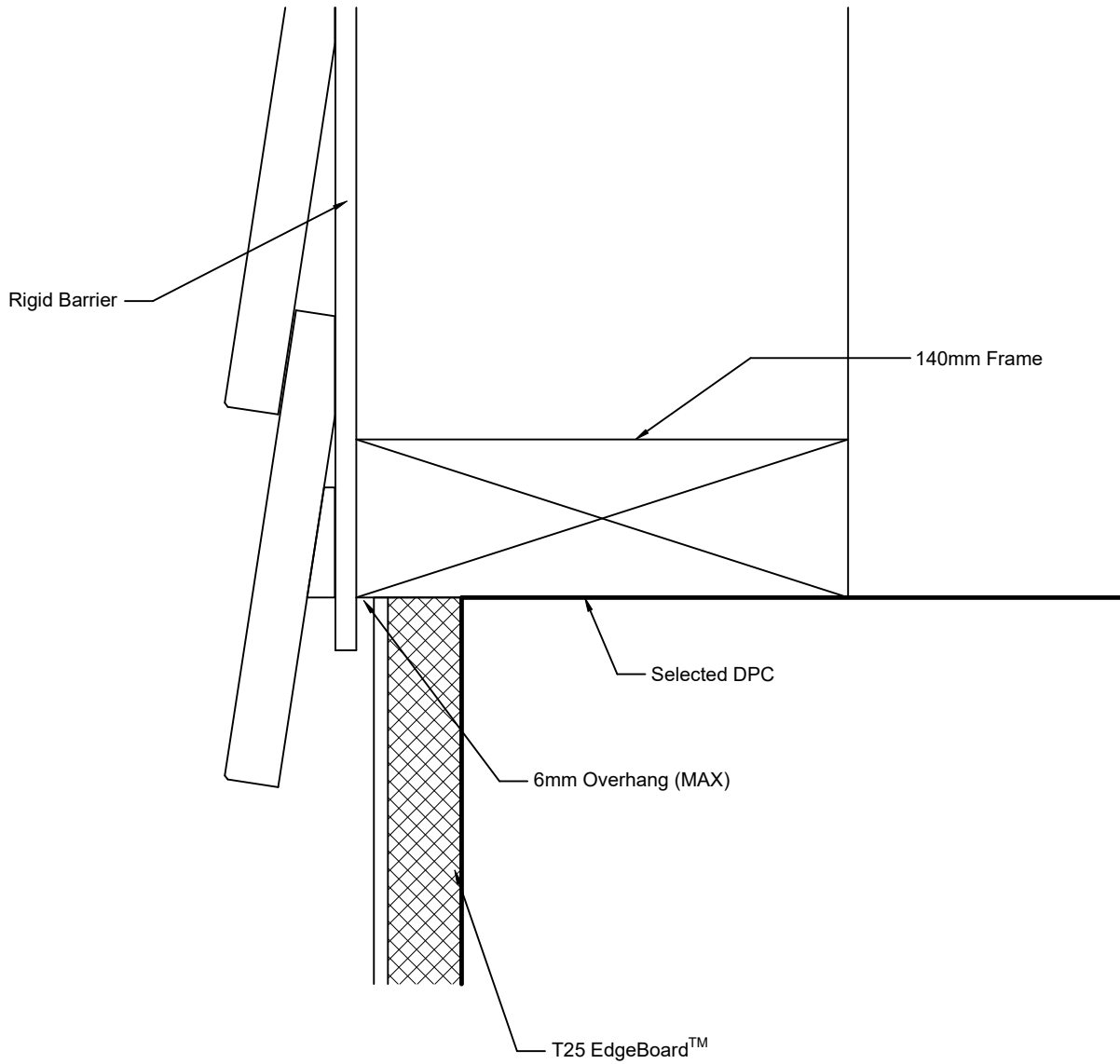
**T25 EdgeBoard™  
with ventilated  
bevel cladding  
and rigid barrier  
(90 mm frame)**

DETAIL BE05 - rev.140923 - N.T.S.



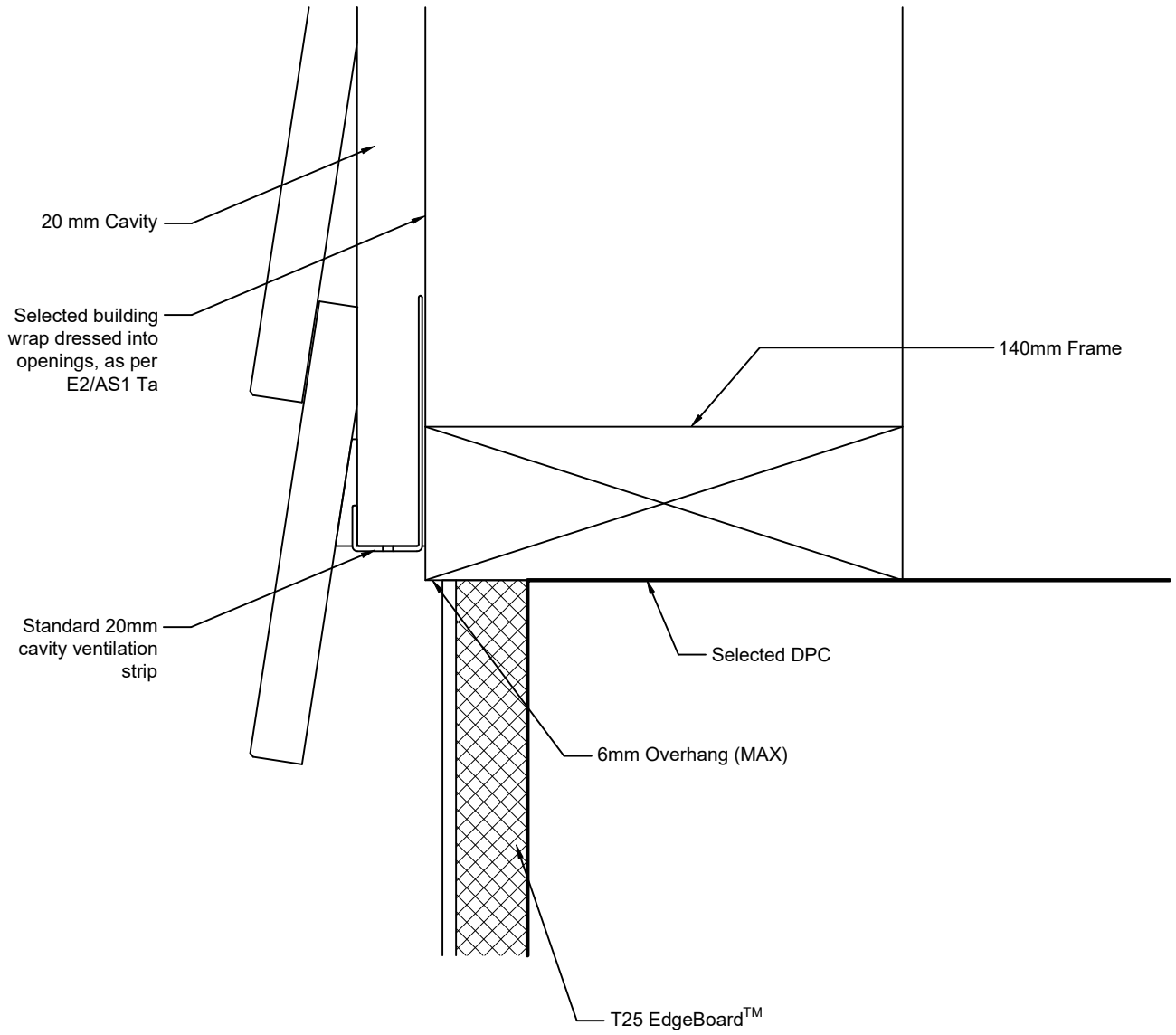
**T25 EdgeBoard™  
with direct fix bevel cladding  
(140 mm frame)**

DETAIL BE04 - rev.140923 - N.T.S.



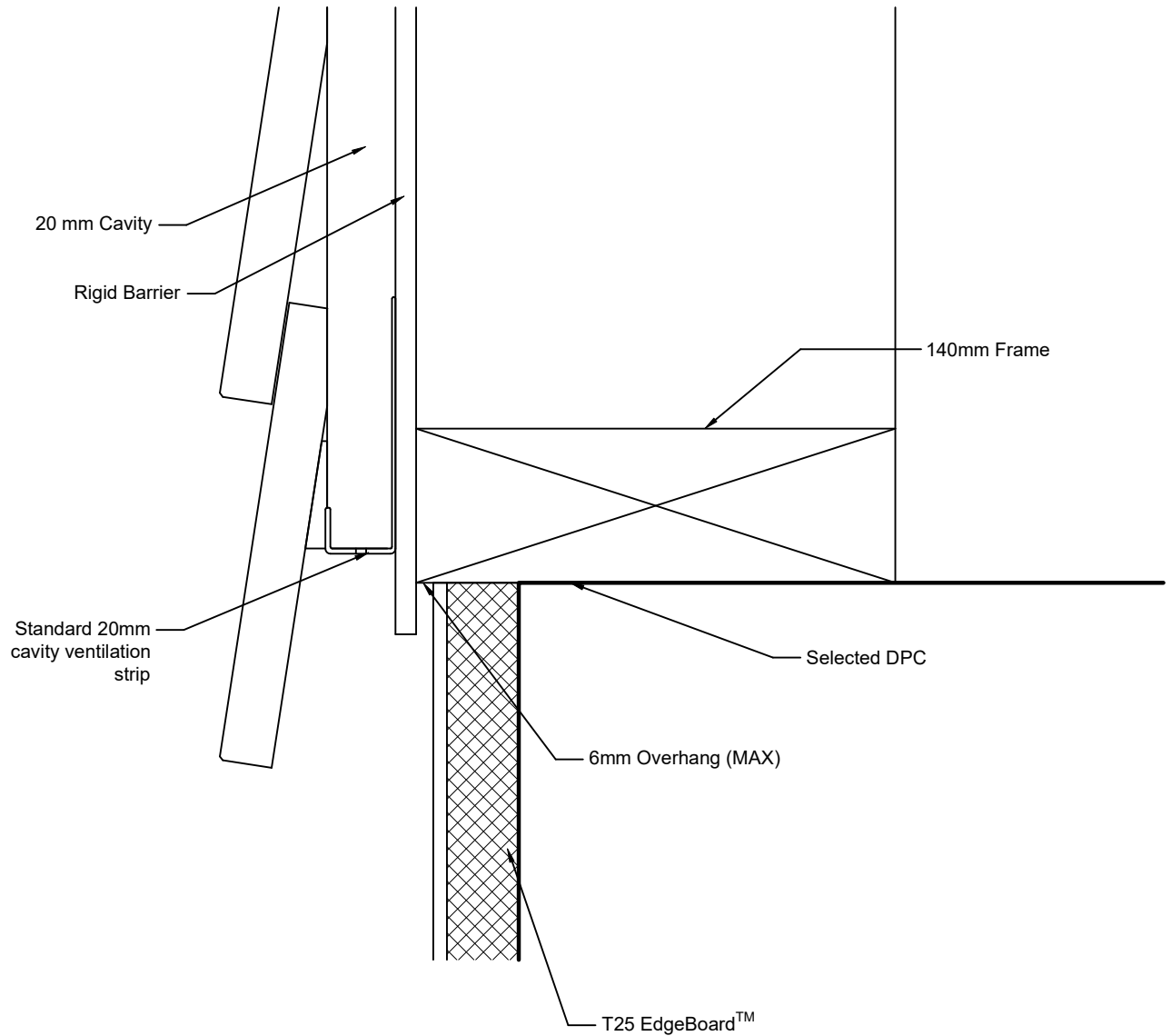
**T25 EdgeBoard™**  
**with direct fix bevel cladding and rigid**  
**barrier**  
**(140 mm frame)**

DETAIL BE03 - rev.140923 - N.T.S.



**T25 EdgeBoard™  
with bevel cladding  
(140 mm frame)**

DETAIL BE02 - rev.140923 - N.T.S.



**T25 EdgeBoard™  
with bevel bladding  
and rigid barrier  
(140 mm frame)**

DETAIL BE01 - rev.140923 - N.T.S.